



## SOL 40 P



### DESCRIPTION

**SOL 40 P** is a profile that allows to connect two wooden and laminate floors and that works as an expansion joint. The profile is composed by a BASE in aluminum, a rigid impact-resistant vinyl resin insert (PIN) and by a TOP in aluminum. Its particular design and the availability of several finishes, make it a much sought-after profile that can be used with any wooden and laminate floor.

### MATERIAL

**SOL 40 P** is a profile that allows to connect two wooden or laminate floors and that works as an expansion joint. The profile is composed by a BASE in natural aluminum, a rigid impact-resistant vinyl resin insert (PIN) and by a TOP in aluminum. The BASE, with a width of 45 mm, is punched to ensure its fixing with adhesive or screws. The PIN, that connect the BASE to the TOP, is available in the height of 7, 9, 11, 13, 15, 17 and 19 mm. It is realized in rigid impact-resistant vinyl resin to prevent the movement of electric charges from the screed to the floor. The TOP in aluminum, with a visible surface of 40 mm, is available in anodized gold, silver and bronze aluminum. Its particular design and the availability of several finishes make **SOL 40 P** a much sought-after profile that can be used with any wooden and laminate floor.

### AREAS OF USE

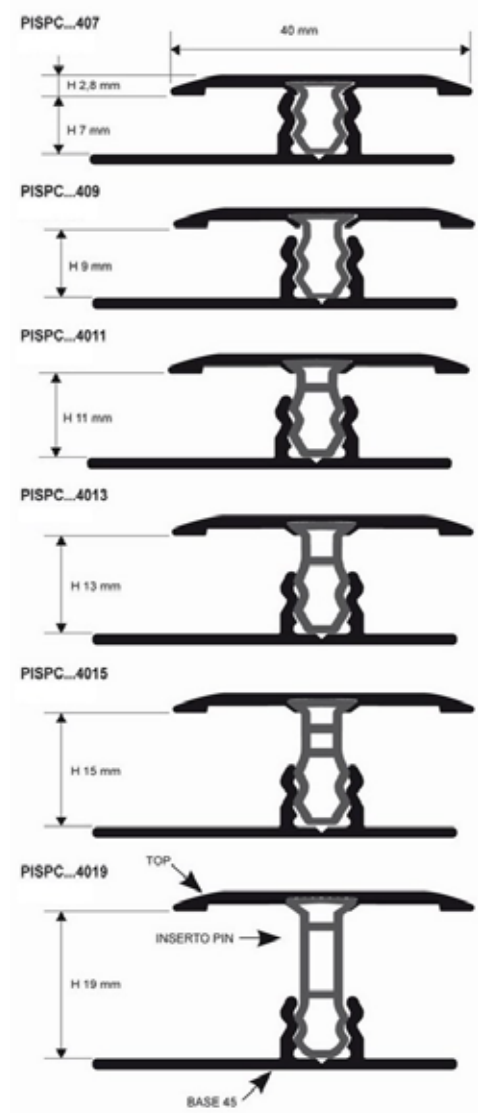
**SOL 40 P** in anodized aluminium is suitable for indoors environment where good resistance to mechanical and chemical stresses are required.

### WARNINGS

Do not use **SOL 40 P** in anodized aluminium in the swimming pool, outdoor and in environments where aggressive substances are used.

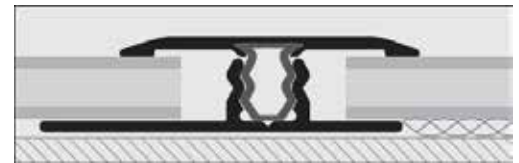
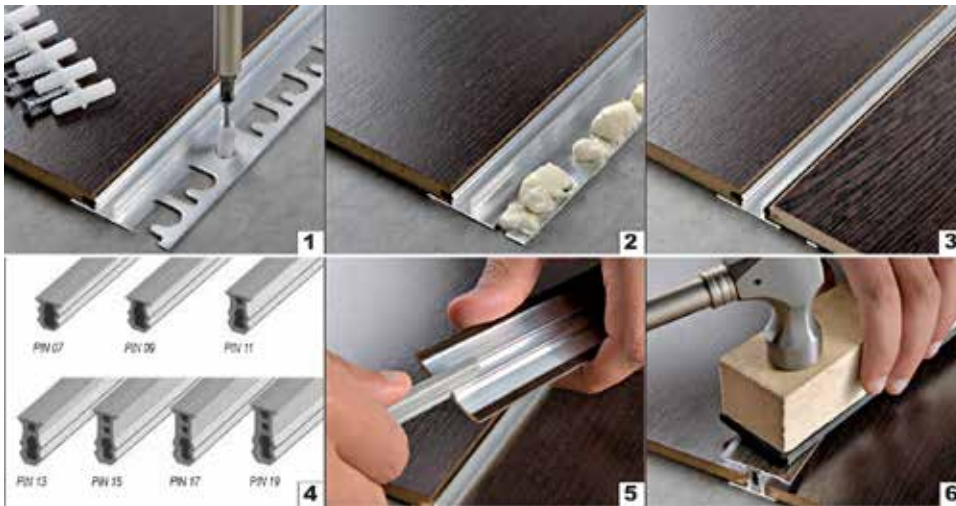
### MAINTENANCE

**SOL 40 P** does not require any special maintenance; it is suggested to clean it with normal household cleaning products.





## SOL 40 P



### LAYING INSTRUCTION

1. Choose "SOL 40 P" in the desired finish and according to the thickness of the floor
2. Cut the aluminum BASE at the desired length and fix it with adhesive or screws (1;2).
3. Lay the wooden floor or laminate making sure to leave a 5 mm. joint between the BASE and the floor (3).
4. Cut the aluminum TOP and the PIN insert at the desired length.
5. Slot the PIN insert in the TOP and place the profile over the "U" shaped channel of the BASE (5).
6. Using a wooden block and a hammer, apply pressure evenly over the whole length of the profile (6).

### TEXT TEMPLATE FOR TENDERS

Supply and installation of profile that allows to connect two wooden or laminate floors and that works as an expansion joint. The profile is composed by a BASE in natural aluminum, with a width of 45 mm, a rigid impact-resistant vinyl resin insert (PIN) with a height of 7 / 9 / 11 / 13 / 15 / 17 / 19 mm and by a TOP, with a visible surface of 40 mm, in anodized gold / silver / bronze aluminum, like SOL 40 P of the Progress Profiles company.

**PISPC... 407 / 409 / 4011 / 4013 / 4015 / 4017 / 4019:** TOP in aluminium + PIN insert + BASE in aluminium

**PISPC... 4079S / 4099S / 40119S / 40139S / 40159S / 40179S / 40199S:** TOP in aluminium + PIN insert + BASE in aluminium self pack

Profile height: \_\_\_\_\_ mm  
 Profile length: \_\_\_\_\_ mt  
 Material: \_\_\_\_\_ €/mt  
 Application: \_\_\_\_\_ €/mt  
 Total value: \_\_\_\_\_ €/mt